

1 Mayfair Gardens
Ponteland
Newcastle upon Tyne
NE20 9EZ

Price
£215,000



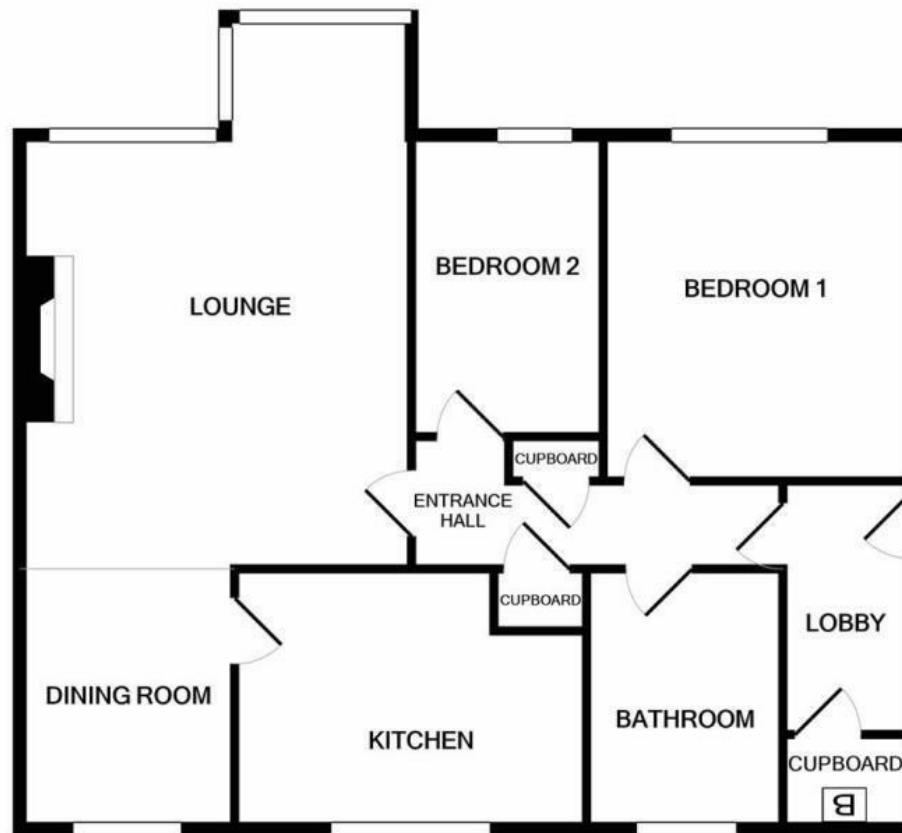
1 Mayfair Gardens
Ponteland
Newcastle upon Tyne
NE20 9EZ

- 2 Bedrooms
- Kitchen
- Garage
- No Onward Chain

- Living/Dining Room
- Shower Room/WC
- Recently Modernised







TOTAL APPROX. FLOOR AREA 804 SQ.FT. (74.7 SQ.M.)

Whilst every attempt has been made to ensure the accuracy of the floor plan contained here, measurements of doors, windows, rooms and any other items are approximate and no responsibility is taken for any error, omission, or mis-statement. This plan is for illustrative purposes only and should be used as such by any prospective purchaser. The services, systems and appliances shown have not been tested and no guarantee as to their operability or efficiency can be given
Made with Metropix ©2021

EPC Rating: C
Council Tax Band: D

Whilst every care has been taken to prepare these particulars, they are for guidance purposes only. All measurements are approximate and whilst every care has been taken to ensure their accuracy, they should not be relied upon and potential buyers/tenants are advised to recheck the measurements. The agent has not tested any equipment, services, fixtures or fittings and makes no representation regarding their condition.

CONTACT

11 West Road, Ponteland,
Northumberland, NE20 9SU

E: ponteland@goodfellowsestateagents.com
T: 01661 829164

Goodfellows
estate agents.com